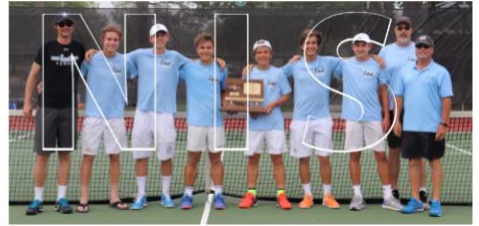
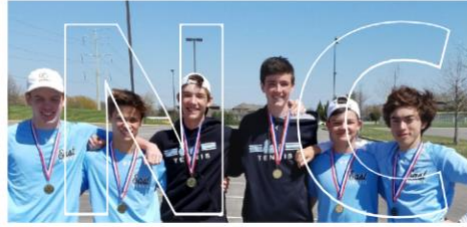


Lancer Tennis Doubles Academy



June 21-24
SM East High School Tennis Courts

2/3 of players who compete on the regional team in HS tennis play doubles. We need players who can translate their tennis skills into doubles competition. Lancer Tennis Doubles Academy will help prepare you for the HS season by focusing on doubles skills and strategy development.

Session One: Entering 9th – 12th grade - GIRLS – 1:00-2:30 p.m.

Session Two: Entering 9th – 12th grade - BOYS – 2:30-4:00 p.m.

Camp Fee: \$40/player (t-shirt included – distributed after camp)

Because of court space at the SME HS tennis courts and in order to create a safe environment, each session is limited to 24 players. We will confirm participation upon receipt of payment.

Please send completed form (either paper or [electronic](#)) & check (payable to Shawnee Mission East Tennis Booster Club) to:
Andrew Gibbs
6521 Roe Ave.
Prairie Village, KS 66208

Questions: Contact Coach Gibbs at andrewgibbs@smsd.org or 815 592-7722

Camper's Name: _____

Parent's Name: _____

Telephone: _____

Email: _____

Grade (Fall 2022): _____

T-Shirt Size: ADULT XS S M L XL

In consideration for participation of my child in this event, I hereby release, indemnify, and hold harmless Coach Andrew Gibbs, the Shawnee Mission East Tennis Booster Club, the Shawnee Mission School District and all of their employees, independent contractors, affiliates or other participants from all claims for personal injuries, damages, or any other causes of action (present and future) resulting from participation in this event.

Parent/Guardian Signature: _____